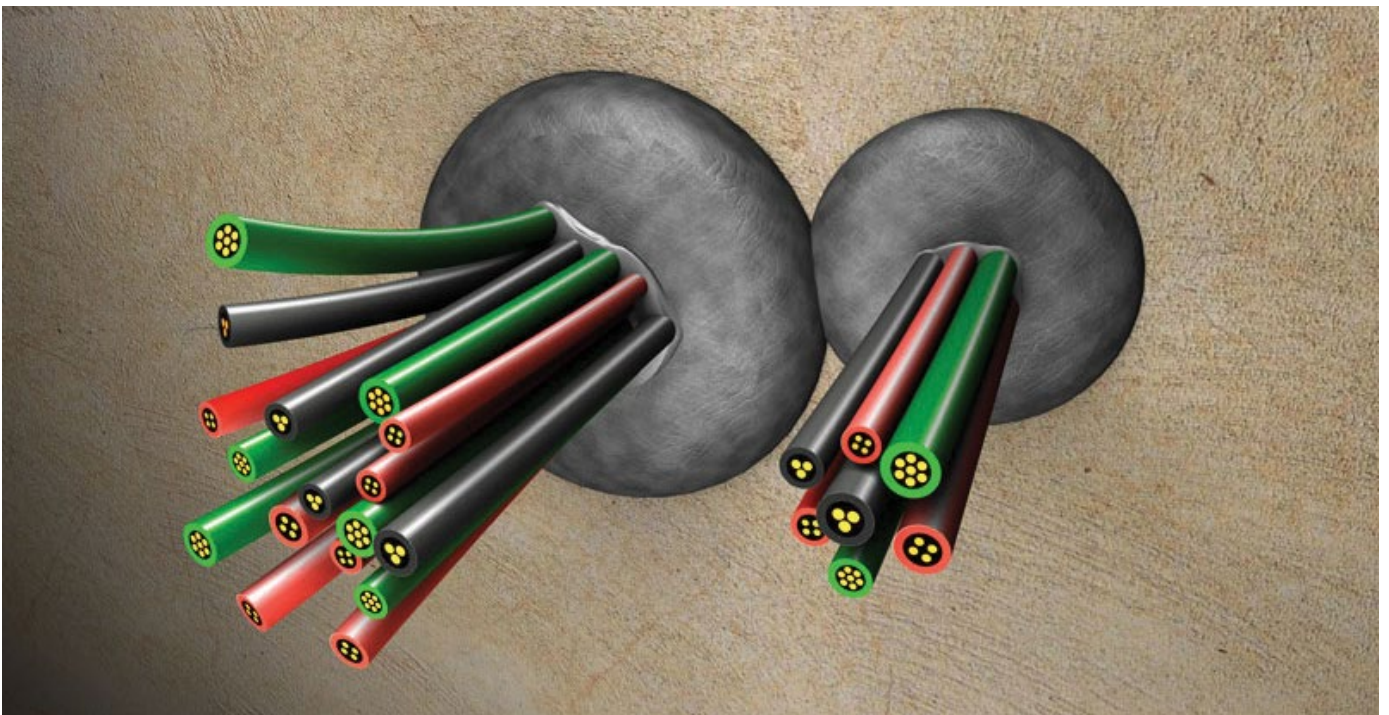


## PROMASTOP®-P Fire stopping plug



[www.promat-see.com](http://www.promat-see.com)





## General description

PROMASTOP®-P is a permanently elastic intumescent plug, which creates pressure on expansion and is used to prevent especially the spread of smoke.

## Fields of application

PROMASTOP®-P fire stopping plug is a shaped seal for walls and floors. It is designed to be used with single cables, cable bundles or combustible and non-combustible pipes to prevent the spread of smoke, fire and heat.

## System advantages / customer benefit

- Permanently elastic and dust-proof
- Quick and easy, dust-free installation
- Easy retrofitting of cables and plastic pipes

## Test certificate / approval

- EN 1366-3 (cables/cable bundles, pipes)
- EN 13501-2

## Packaging

- PROMASTOP®-P 65 - 42 pcs./carton
- PROMASTOP®-P 80 - 30 pcs./carton
- PROMASTOP®-P 110 - 20 pcs./carton
- PROMASTOP®-P 125 - 14 pcs./carton
- PROMASTOP®-P 140 - 9 pcs./carton
- PROMASTOP®-P 170 - 8 pcs./carton
- PROMASTOP®-P 210 - 6 pcs./carton
- PROMASTOP®-P 260 - 2 pcs./carton
- 40 cartons/pallet

Subject to change.

## Storage requirements

- Store in dry conditions

## Safety instructions

- Please refer to the safety data sheet for additional advice

## Technical data and properties

Colour	dark grey
Density	approx. 250 g/l
Dimensions	diameter in mm (bottom / top)
PROMASTOP®-P 65	65 / 75
PROMASTOP®-P 80	80 / 90
PROMASTOP®-P 110	110 / 120
PROMASTOP®-P 125	125 / 135
PROMASTOP®-P 140	140 / 150
PROMASTOP®-P 170	170 / 180
PROMASTOP®-P 210	210 / 220
PROMASTOP®-P 260	260 / 270
Expansion ratio (loaded)	approx. 1:2
Expansion temperature	approx. 150 °C
Environmental compatibility	solvent-free, no odour, environmentally friendly

## **Slovenia**

**Etex Building Performance**

**Promat d.o.o.**

Kidričeva 56b

4220 Škofja Loka

T + 386 4 51 51 451

F + 385 4 51 51 450

E [info@promat-see.com](mailto:info@promat-see.com)

[www.promat-see.com](http://www.promat-see.com)

## **Romania**

**Etex Building Performance S.A.**

Str. Vulturilor Nr. 98, 5th Floor

030857 Bucharest

T +40 31 224 01 00

F +40 31 224 01 01

E [info.ro@promat-see.com](mailto:info.ro@promat-see.com)

[www.promat-see.com](http://www.promat-see.com)

## **Hungary**

**Etex Building Performance**

Pirosrózsa u. 32.

1163 Budapest

T +36 1 317 58 91

E [info.hu@promat-see.com](mailto:info.hu@promat-see.com)

[www.promat-see.com](http://www.promat-see.com)

## **Croatia, Bosnia and Herzegovina**

**Etex Building Performance**

**Branch office of Promat d.o.o.**

Kovinska 4a

10090 Zagreb

T +385 1 349 63 24

F +385 1 379 41 54

E [info.hr@promat-see.com](mailto:info.hr@promat-see.com)

[www.promat-see.com](http://www.promat-see.com)

## **Bulgaria**

**Etex Building Performance S.A.**

Str. Vulturilor Nr. 98, 5th Floor

030857 Bucharest

M +359 878 81 51 05

E [info.bg@promat-see.com](mailto:info.bg@promat-see.com)

[www.promat-see.com](http://www.promat-see.com)

## **Slovakia**

**Etex Building Performance**

Pražská 2

949 11 Nitra

T +421 377 729 165

E [info.sk@promat-see.com](mailto:info.sk@promat-see.com)

[www.promat-see.com](http://www.promat-see.com)

## **Serbia, Macedonia, Montenegro**

**Etex Building Performance d.o.o.**

Vojvode Putnika 79

21208 Sremska Kamenica

T +381 18 4 530 297

M +381 64 61 39 763

F +381 18 4 230 570

E [info.rs@promat-see.com](mailto:info.rs@promat-see.com)

[www.promat-see.com](http://www.promat-see.com)

## **Greece**

**Etex Building Performance S.A.**

Str. Vulturilor Nr. 98, 5th Floor

030857 Bucharest

T +40 31 224 01 00

F +40 31 224 01 01

E [info.ro@promat-see.com](mailto:info.ro@promat-see.com)

[www.promat-see.com](http://www.promat-see.com)